

ENDEAVOUR

/ inspiring workspace

SHEFFIELD

**A CITY FORGED ON THE REPUTATION OF
CREATING THINGS. A CITY OF INVENTORS,
ACADEMICS AND PIONEERS, CONTINUOUSLY
ADAPTING TO THE WORLD AROUND IT.**

**A CITY THAT PROVIDES A PLATFORM TO ALLOW
YOUR BUSINESS TO REACH ITS POTENTIAL.**



ENDEAVOUR
A LANDMARK
62,862 ^{SQ FT}
GRADE A OFFICE
BUILDING LOCATED
AT THE ESTABLISHED
SHEFFIELD DC





Endeavour, Sheffield DC



62,862 SQ FT
OF OFFICE SPACE
WHERE PEOPLE WILL BE
PROUD TO SAY “THIS
IS WHERE I WORK”

ENDEAVOUR CREATING WORKPLACE FOR

“”
THIS IS
WHERE
I WORK



Sheffield, Train Station



Building on the great success of Electric Works, Ventana House and Acero, the first three buildings at Sheffield DC, Endeavour is the final phase of this exemplary landmark business destination.

Endeavour is a new build opportunity that will provide Grade A office space, designed with the occupants in mind. With large flexible floor plates in a super-prime city centre location, it will deliver both prominence and prestige. Endeavour offers a building that will provide a platform for your business to perform productively and efficiently.

The building is located adjacent to both the main rail station and bus interchange with on-site car parking and a dedicated cycle hub, making this an unrivalled accessible city centre location.

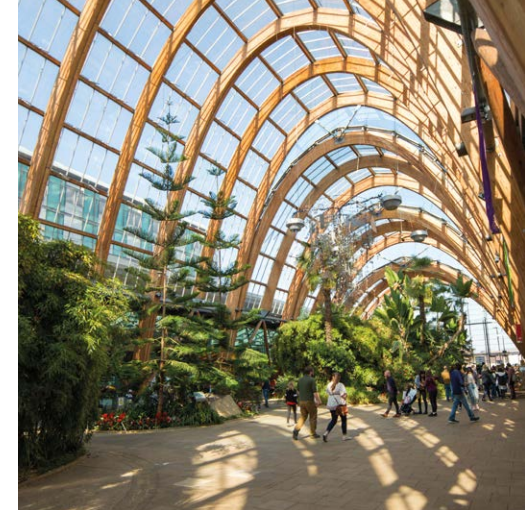
AN INSPIRING THE NEXT GENERATION



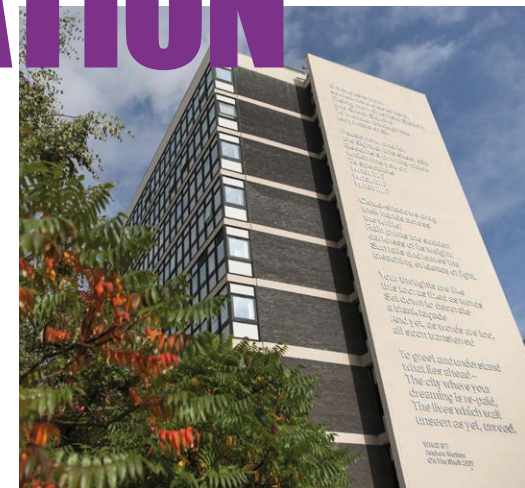
Endeavour, Sheffield DC



Sheffield Hallam University



Sheffield's Winter Gardens



OPEN SPACE AND CONNECTIVITY

No surprise that Natural England chose Sheffield as it's head office location...



555 SQ MILES
= 1,437 KM²

THE PEAK DISTRICT HAS IT ALL



**4 AIRPORTS WITHIN
90 MINS PROVIDE
DIRECT FLIGHTS TO ALL
CORNERS OF THE GLOBE**



**4TH
LARGEST
CITY IN
ENGLAND**

WHY

SHEFFIELD?

43 TRAINS PER DAY ON
AVERAGE TRAVELLING
TO LONDON

**LESS THAN 50 MINS TO
MANCHESTER AND LEEDS**

2^{HR} FROM
LONDON

**1 OF ONLY 8 TRAM
SYSTEMS IN THE UK**



18 ROUTE LENGTH
(MILES)
6 PARK AND
RIDE SITES
48 TRAM
STOPS



Sheffield, Trams

RETAIL AND LEISURE

**196+ MARKET STALLS, ARTISAN
FOOD PRODUCERS & LOCALLY
SOURCED ORGANIC PRODUCTS
ALL HOUSED AT THE MOOR MARKET**



Sheffield
MOOR



From market towns through to city centres the Sheffield City Region has something for everyone.

Sheffield's authentic and independent spirit is reflected in the city centre's retail offering, with an eclectic mix of quirky shopping districts alongside a large variety of high-street brands and two of the UK's largest food halls; Cutlery Works and Kommune. A short journey outside of the city centre is one of Europe's largest shopping centres, Meadowhall, home to over 270 outlets.

1.4^M
**WORKFORCE
CATCHMENT**

University of Sheffield



**HOME TO THE
HIGHLY SUCCESSFUL**

AMRC /  The University
Of Sheffield.
ADVANCED MANUFACTURING
RESEARCH CENTRE

 **SHEFFIELD
OLYMPIC
LEGACY PARK**

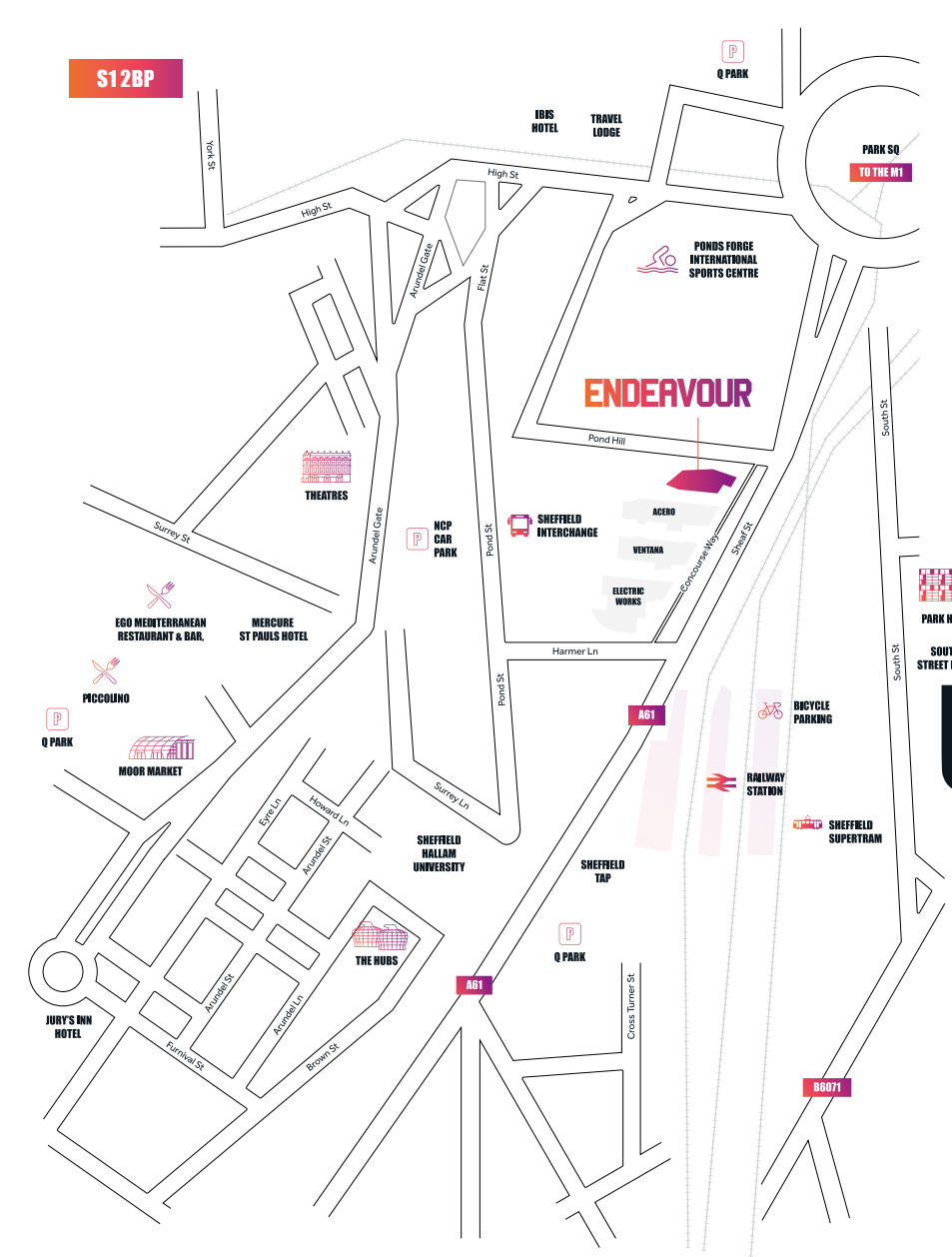
 **UTC
SHEFFIELD**
**Sheffield
Hallam
University**

**60
ACRE**
**SHEFFIELD
OLYMPIC
LEGACY
PARK**

Sheffield is home to some of the greatest minds in the country. A city with an international reputation as a centre of advanced manufacturing and innovation.

With over 60,000 students based at two world class universities ranked in the Top 100 Universities in the World, Sheffield has the 5th highest student population in the UK's core cities, providing a rich vein of highly skilled future staff.

S12BP



Endeavour is the final phase of Sheffield's most iconic business destination.

Located in a super-prime location opposite Sheffield city centre railway station, adjacent to the bus interchange and Supertram stop, the building is highly accessible to staff travelling into the city centre by public transport.

Positioned off Sheaf Street, Endeavour is within easy walking distance of all the amenities that Sheffield's vibrant city centre has to offer. Regarded as England's greenest city centre, Sheffield is home to the largest regional theatre complex outside of London and has a night time economy to cater to all tastes and budgets.

UNRIVALLED

CONNECTIVITY



First 

sky

 egress

ATKINS

noch

 UTC
SHEFFIELD
OLYMPIC
LEGACY PARK



 sopra banking

sky BET

 IWG International
Workplace
Group

**IN GREAT
COMPANY**

HSBC 

IBM



CERTARA[®]

Kennedys

 SPACES.



Sheffield
Hallam
University

 PRIMETALS
TECHNOLOGIES

'capita





Riding Inner City Trails



For the active imagination, Sheffield is one of England's greenest cities with over 4.5 million trees and 20,000 Strava users enjoying recreational cycling across the city.

Sheffield is best known as the Outdoor City, home to both the UK's largest multi-sport training centre - the English Institute of Sport - plus the Health & Wellbeing Research Centre at Sheffield Olympic Legacy Park.

For the culture curious, Sheffield is home to the largest theatre complex outside London, with the iconic Crucible Theatre, hosting the World Snooker Championship for the past 44 Years. For the musically inclined Sheffield has a thriving local music scene, making it one of the UK's leading music cities. Venues such as City Hall, Sheffield Arena, O2 Academy, and the legendary Leadmill, host a broad range of international bands, artists and DJs throughout the year.

57 BREWERIES
IN THE SHEFFIELD
CITY REGION

Women of Street Statue



A CITY INSPIRING WELLBEING

61%

OF SHEFFIELD
IS MADE UP OF
GREEN SPACES

Crucible and Lyceum Theatre

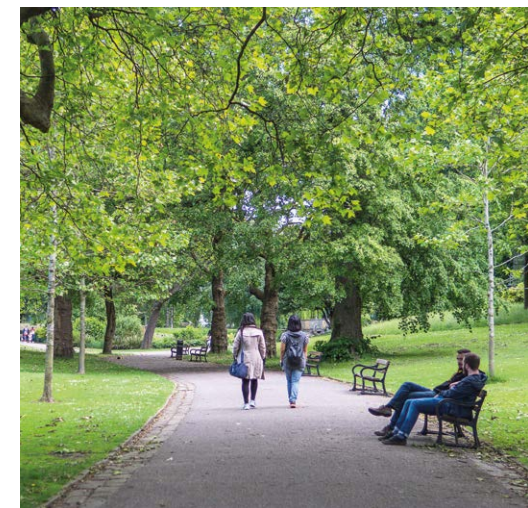


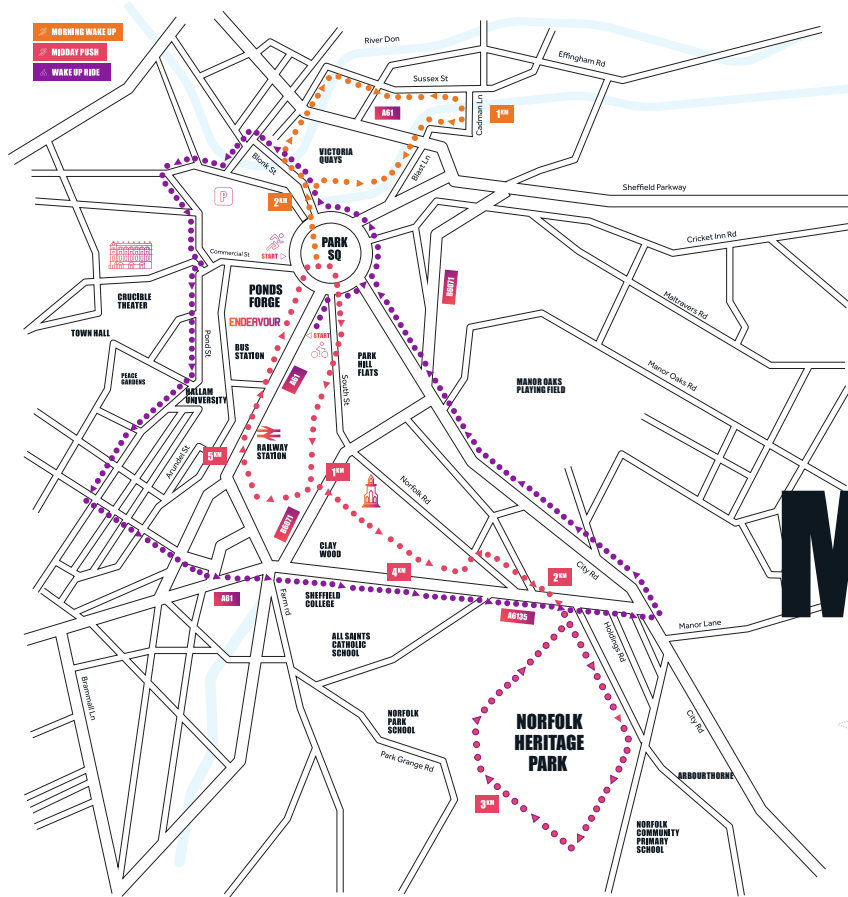
Peace Gardens, Sheffield



**SHEFFIELD IS
HEALTHY, THRIVING
AND SUSTAINABLE,
IT'S FUTURE-READY**

Garden near Sheffield University





FIVER WEIRS RUN

Distance 9 km



Scan QR code for route

PARK RUN

Distance 16 km



Scan QR code for route

MORNING WAKE UP

Distance 2 km

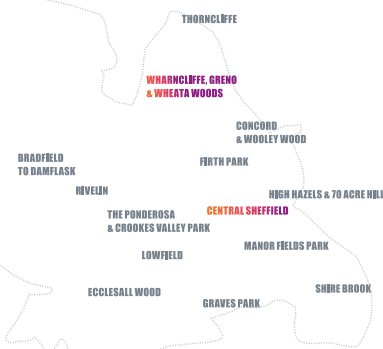
Start Commercial St, S1 2AR

MIDDAY PUSH

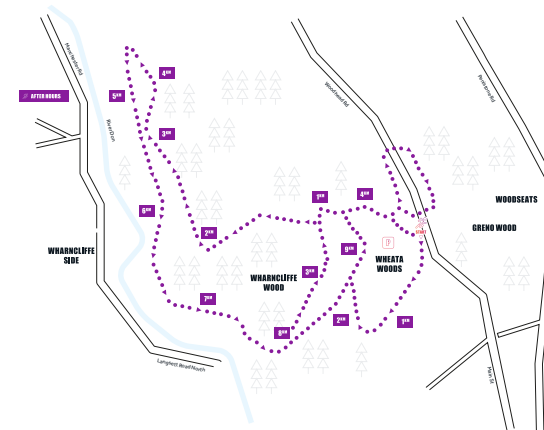
Distance 5 km

Start Commercial St, S1 2AR

MAKE YOUR OWN PATH



SHEFFIELD RUNNING ROUTES



AFTER HOURS

Distance 10 km

Start Greno Woods, S35 8RS

Escape from the daily grind and enjoy running and cycling routes around Sheffield. The wake up route explores the city's central waterways.

It follows the canal from its basin at Victoria Quays, crossing a bridge to run alongside the River Don.

The city also offers endless recreational opportunities for staff commuting to work, taking a lunchtime break or a walking meeting. There's a whole lot more to Sheffield than meets the eye.



DAM FLASK LOOP

Distance 25 km



Scan QR code for route



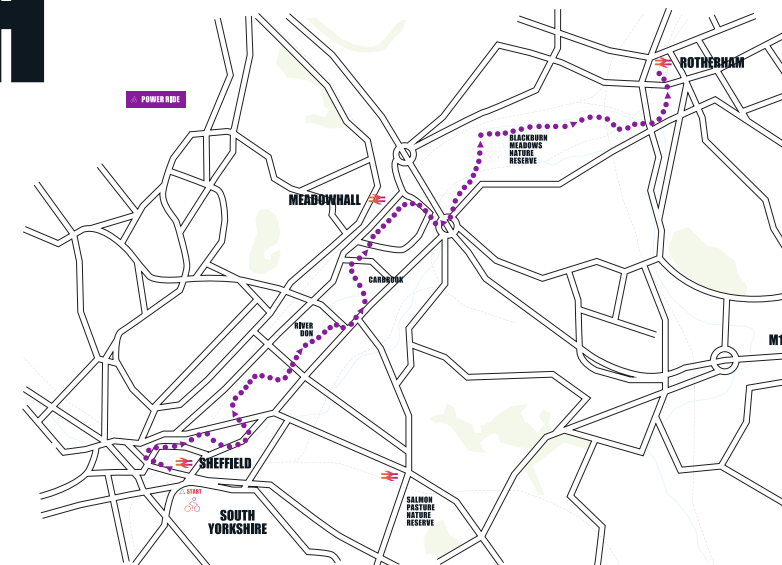
Cycle Routes Through Sheffield



POWER RIDE

Distance 12 km

Start Sheffield Station, S1 2BP





INDICATIVE BUILDING RECEPTION CGI

Endeavour offers premium workspace with an impressive sixth floor private roof terrace providing panoramic views across the Sheffield skyline. The building is finished to a Grade A specification with flexible open plan floor plates capable of subdivision to suit a variety of businesses' space requirements.

The building has been designed to create a welcoming and impressive sense of arrival with a double height entrance reception. Internally, the building is capable of accommodating an occupancy density of 1 person: 8 sq m. The office floor plates are flooded with natural light on all four elevations, with high performance solar control floor to ceiling glazing. Endeavour has the comfort, productivity and sustainability of its occupants in mind.



Showers & Changing Facilities



Drying Rooms & Lockers Available



High Quality Self-Contained Toilet Cubicles



Secure Cycle Storage, with Electric Charging Points & Repair Station



Air Conditioning



24 Hour Access



Passenger Lifts



Full Access Raised Floor



Target EPC - A



LED Lighting



Fully DDA Compliant



Sixth Floor Roof Terrace



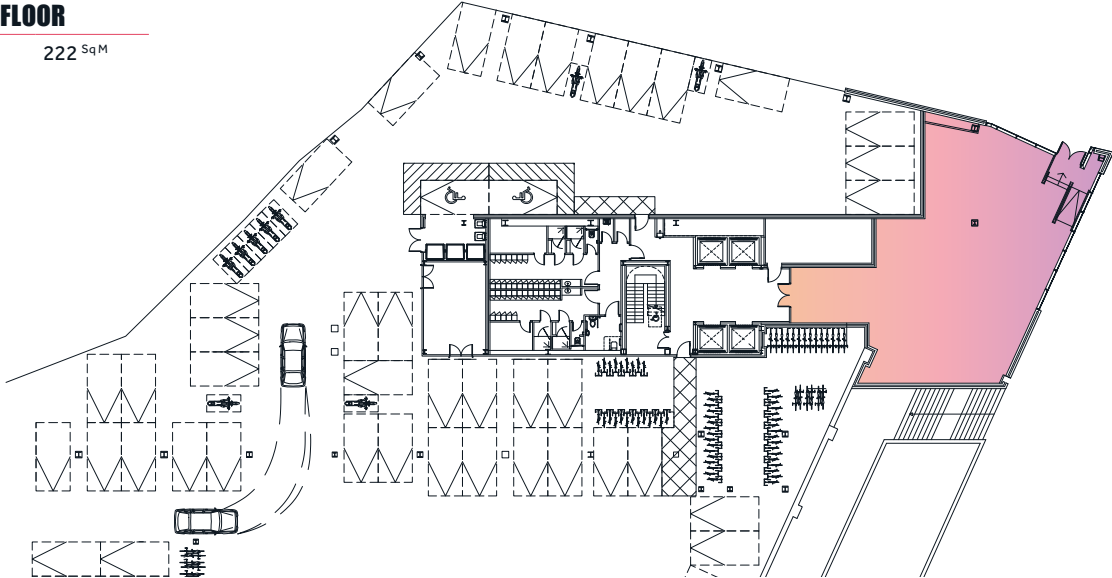
46 Underground Parking Spaces

BREEAM®

BREEAM Rating Excellent

GROUND FLOOR

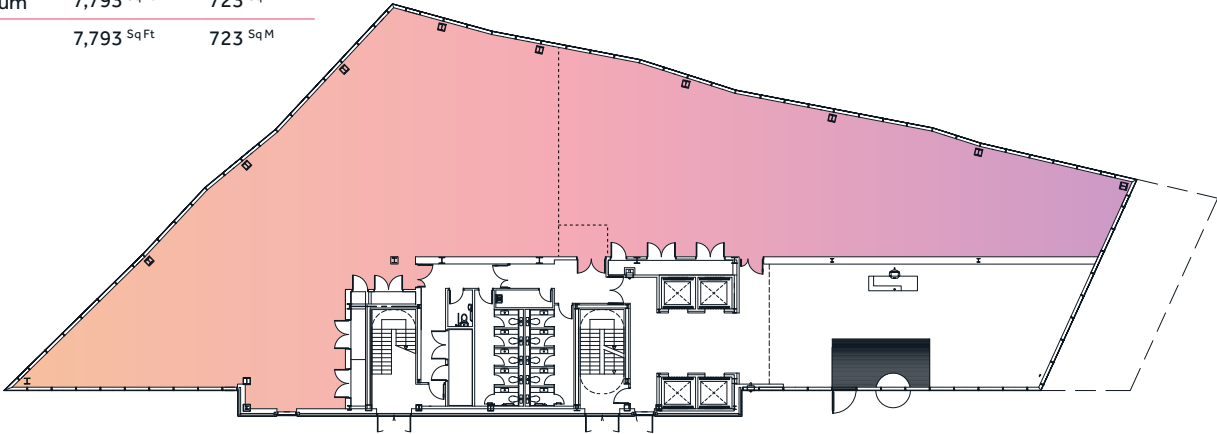
2,400 SqFt 222 SqM



TYPICAL LOWER FLOORS

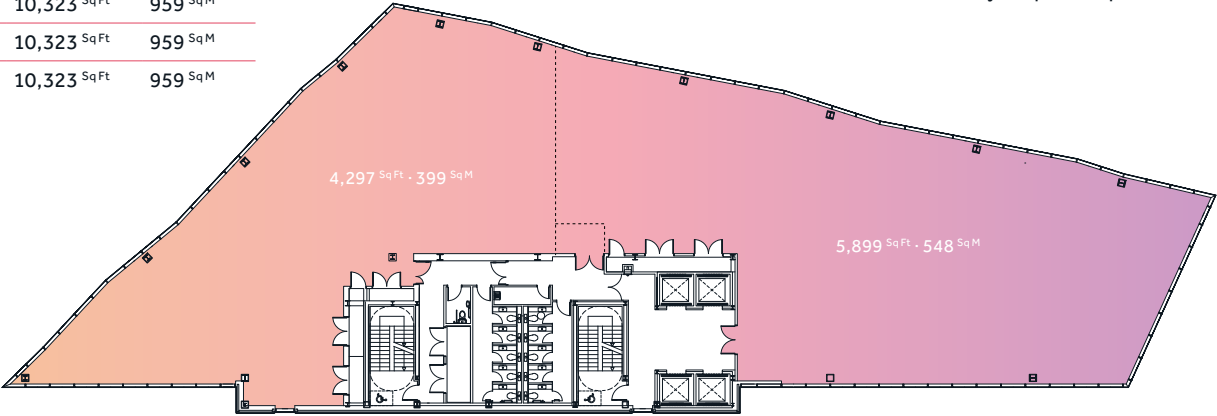
Podium 7,793 SqFt 723 SqM

First 7,793 SqFt 723 SqM



TYPICAL UPPER FLOORS

Second	10,323 SqFt	959 SqM
Third	10,323 SqFt	959 SqM
Fourth	10,323 SqFt	959 SqM
Fifth	10,323 SqFt	959 SqM



Highly flexible floor plates which are capable of subdivision to accommodate a variety of space requirements.

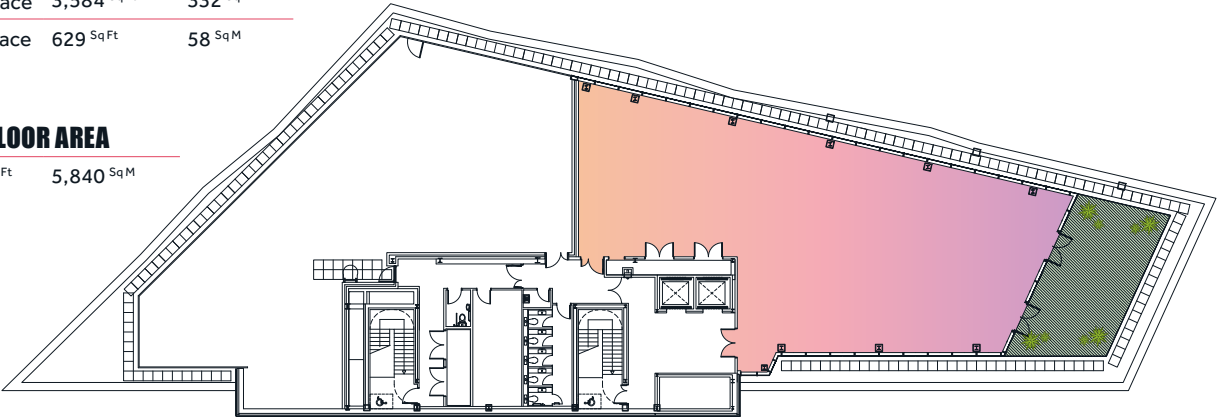
SIXTH FLOOR

Office Space 3,584 SqFt 332 SqM

Roof Terrace 629 SqFt 58 SqM

TOTAL FLOOR AREA

62,862 SqFt 5,840 SqM





A SPACE TO COLLABORATE

PODIUM FLOOR

Total Work Settings 81

COMPRISING OF:

Reception	Collaboration/Touch Down Areas
Communal Area	Tea Point
4 No. Meeting Rooms	80 No. Fixed Workstations
2 No. Hot Offices	Store Room
Focus Booths	Comms Room



FIRST FLOOR

Example Co-working Space

COMPRISING OF:

Reception	Communal Area / Tea Point
7 No. Meeting Rooms	Focus Booths
Co-working Desks	12 No. Private Office Suites (Various Sizes)
Store Room	Comms Room



CREATE THE PERFECT SPACE

Whether you're a professional services business, or within the creative industries sector, the building has been designed to accommodate a variety of space requirements.

With flexible highly divisible floor plates to suit the space requirements of modern office tenants.

UPPER FLOOR

Total Work Settings 94

COMPRISING OF:

Reception	Collaboration/Touch Down Areas
Communal Area	Tea Point
5 No. Meeting Rooms	92 No. Fixed Workstations
Focus Booths	Store Room
Comms Room	



THIRD FLOOR

Total Work Settings 85

COMPRISING OF:

Reception	Communal Area
7 No. Meeting Rooms	Collaboration / Touch Down Areas
Tea Point	84 No. Fixed Workstations
Store Room	Comms Room





Restaurant
↑



Fitness Studio
↑

Endeavour's ground floor offers endless possibilities, to complement the commercial office floor plates on the upper floors.

The ground floor has its own dedicated street entrance, full glass frontage with access to upper floors via the building's central core. The ground floor also has the ability to be connected to the upper office floor via an internal interconnecting staircase, giving you the potential to create a unique workspace for your staff and business.

POTENTIAL FUTURE USES



Bike Store



Fitness Studio



Coffee Shop



Co-working Space



Book Store



Barbers



Retail



Restaurant



Coffee Shop
↑

ENDLESS POSSIBILITIES

GROUND FLOOR

Commercial space opportunities

2,400 SQ FT
OF ENDLESS
FLEXIBILITY



Bike Store
←



Co-working Space
↓

DEVELOPMENT BY

scarboroughgroup.com



KEY DELIVERY TEAM MEMBERS



LETTING AGENTS

For further information or to arrange an inspection please contact:



Rob Darrington
+ 44 (0)114 273 8857

rob@cpppartners.co.uk
cpppartners.co.uk



Tim Bottrill
+ 44 (0)114 299 3121

tim@colloco.co
colloco.co



Peter Whiteley
+ 44 (0)114 272 9750

peter.whiteley@Knightfrank.com
Knightfrank.com

USEFUL LINKS

whatmakes/sheffield.com

theoutdoorcity.co.uk

invest/sheffield.com

sheffieldcityregion.org.uk

scci.org.uk

shu.ac.uk

Sheffield.ac.uk

Sheffield City Centre



Important Notice

1. Particulars: These particulars are not an offer or contract, nor part of one. You should not rely on statements by Commercial Property Partners (CPP), Colloco (C) or Knight Frank (KF) in the particulars or by word of mouth or in writing ("information") as being factually accurate about the property, its condition or its value. Neither CPP, C or KF nor any other agent has any authority to make any representations about the property, and accordingly any information given is entirely without responsibility on the part of the agents, seller(s) or lessor(s).
2. The photograph shows only certain parts of the property as they appeared at the time they were taken, and any CGI's are subject to change.
3. Regulations etc: Any reference to alterations to, or use of, any part of the property does not mean that any necessary planning, building regulations or other consent has been obtained. A buyer or lessee must find out by inspection or in other ways that these matters have been properly dealt with and that all information is correct.
4. VAT: The VAT position relating to the property may change without notice.
5. The floor areas quoted are based on IPMS 3 measurement standard which have been scaled from the architects plans.



